

COORDINATED STUDENT HEALTH SERVICES

MARCIA BYNOE, ARNP-BC, MSN, FNP, SNP
DIRECTOR, COORDINATED STUDENT HEALTH SERVICES



Broward County Public Schools

Coordinated Student Health Services

2

Mission Statement

Coordinated Student Health Services (CSHS) strives to foster growth, development, and educational achievement of our students by promoting their health and wellness in a safe supportive environment. CSHS embraces collaboration with staff, students, families and the community to achieve this goal.



Purpose

3

- Provide an overview of the School Health Program Staffing Model
- Provide an understanding of staffing for 2019-2020 school year
- Identify the gaps in the current School Health Program
- Demonstrate the need for professional licensed (RN's) in all schools

Overview of Student Health Services

4

- ❖ Communicable & Infectious Diseases Control Management
- ❖ State Mandated CORE Health Requirements
- ❖ Immunization Compliance
- ❖ Health Screenings For Students – vision, hearing, scoliosis & BMI
- ❖ Nursing Services - case management, health consultation & trainings
- ❖ Medically Fragile Services
- ❖ Chronic Disease Management & Care Coordination
- ❖ CPR/AED/First Aid Training - American Heart Assoc. Training Ctr.
- ❖ Mental Health
- ❖ Health Partnerships
- ❖ Health & Wellness Promotion/Education, Community Outreach
- ❖ District-wide Medication Administration training & standards



Differentiated Staffing School Health Model (DSSHM)

5

- Implemented in 2009-2010 school year
- Designed to meet the growing health needs of the student population while improving the utilization of funding
- Increase the number of schools and students receiving health services
- Decrease the number of students sent home from school, therefore increasing students academic time

DSSHM Delivery Model

6

Model includes three levels of health services:

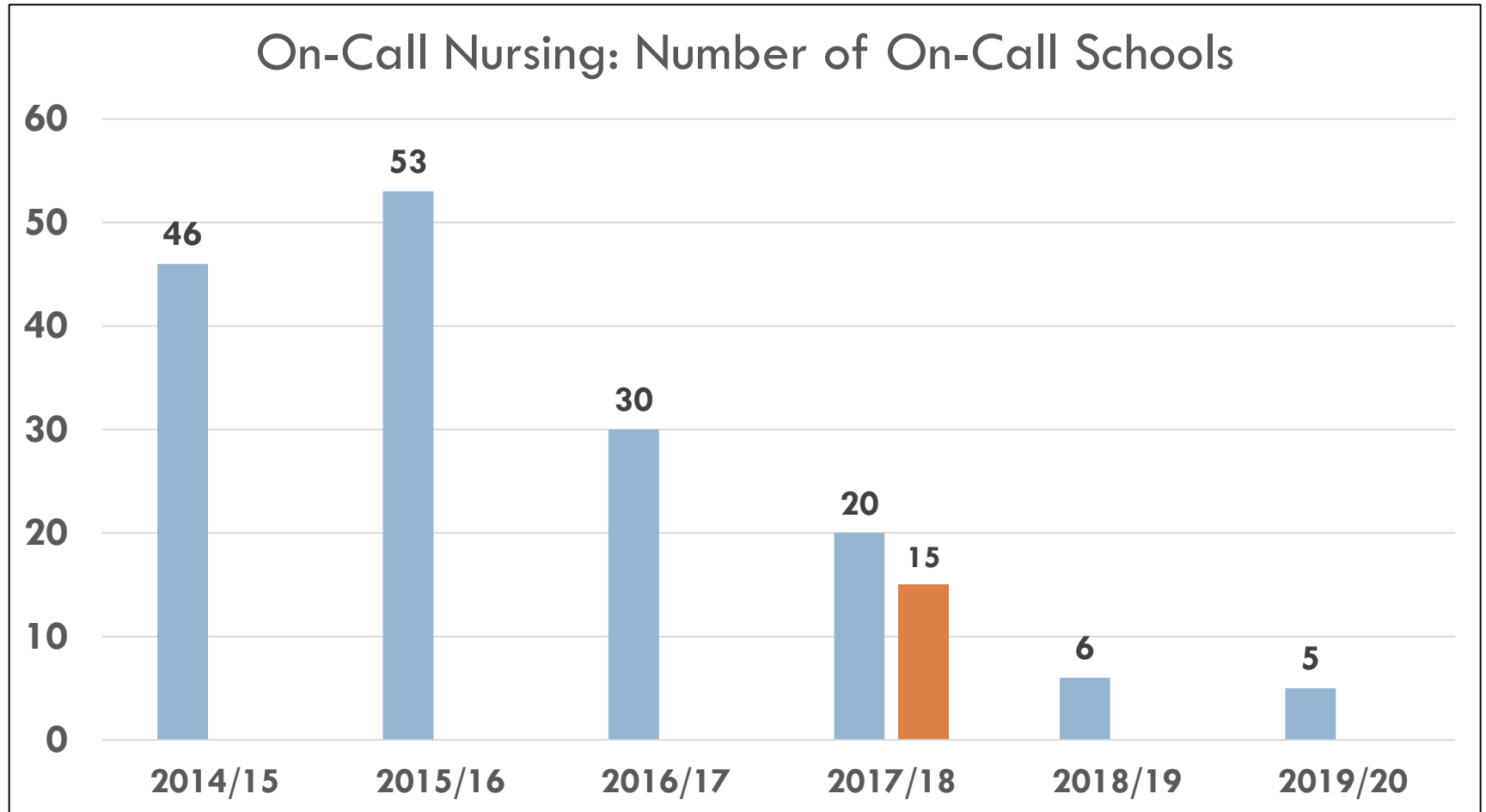
- RN/LPN's – provide care of students with chronic health conditions/high priority health needs
- Health Support Technicians (HST's) with RN supervision – provide care of students requiring basic health services
- On-Call – available services to identified schools with RN consultation

School Health Partners

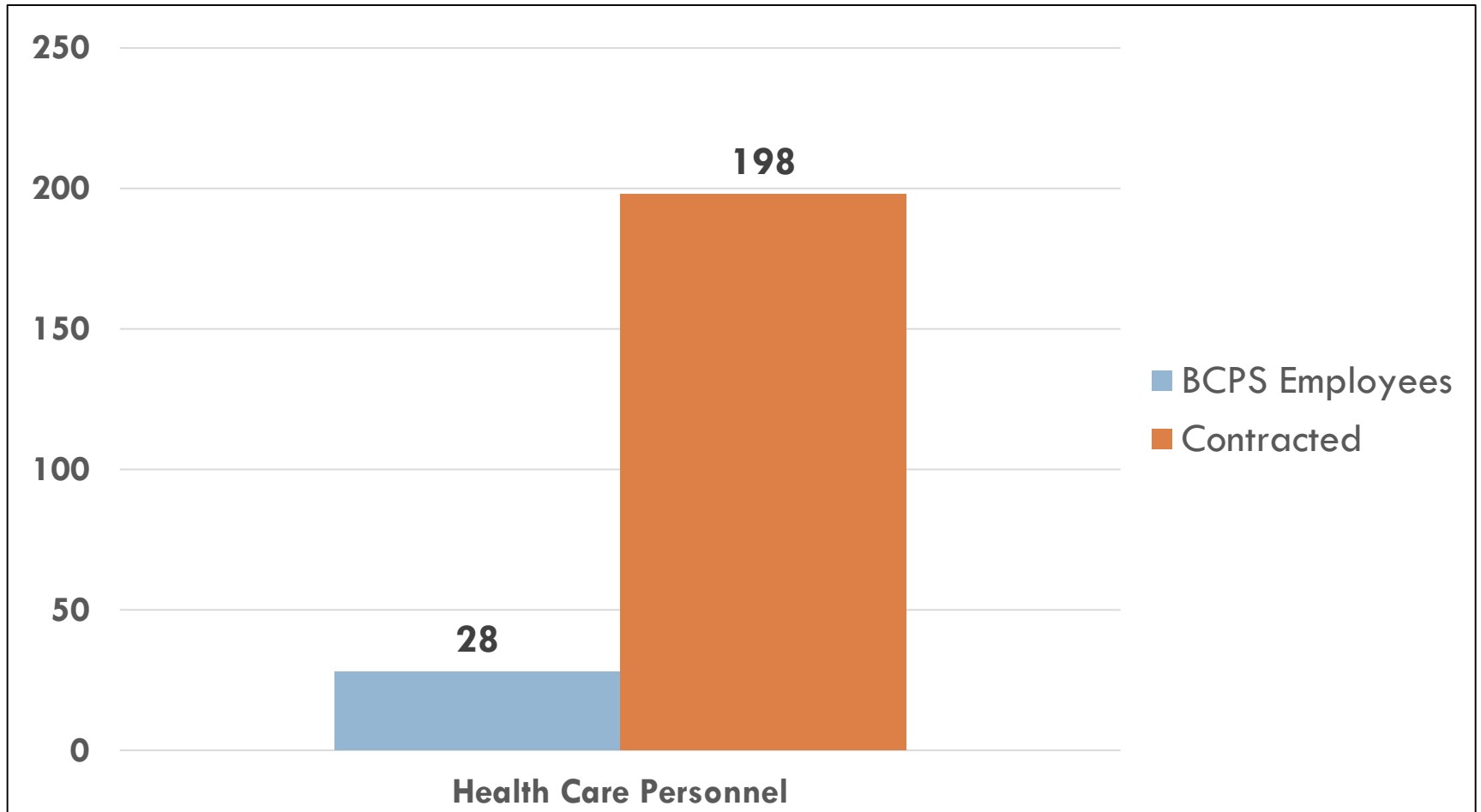
7

- Florida Department of Health – Broward
- Children’s Services Council (CSC)
- Nova Southeastern University
- Memorial HealthCare System
- Jersey College

On-Call Nursing



Health Care Personnel available in BCPS during 2019/20



Summary of On-site Health Care Personnel & Funding Partners 2019 - 2020

On-Site Nursing Services	Funding Entity	Number of Schools	Number of Healthcare Personnel
*Contracted Agency RN's/LPN's (Chronic Health Program)	Exceptional Student Learning Support (ESLS) (SBBC) & (504 funded)	84	85
Clinic RN'S (Chronic Health Program)	Children's Services Council (CSC)	9	9
**Health Support Technicians (Basic School Health Program)	CSC	55	55
**Health Support Technicians (Basic School Health Program)	Florida Department of Health (FDOH)	45	45
Clinic RN's/LPN's (Full Service)	FDOH	3	3
Clinic RN's/LPN's (Centers & Chronic Health Program)	SBBC	25	28
On-Call	FDOH	5	1
Total		226	226

SUMMARY

- * Nursing Services for students with chronic health conditions are discontinued with changes in health needs of the student
- Medical Fragile students are not included in this summary. These students usually receive 1:1 nursing services. Currently there are 134 medical fragile students.
- ** Health Support Technicians are supervised by RN's at a 1:5 ratio. RN's provide staff trainings and IHCP & EAP for students' health care interventions
- FDOH provides an RN for the schools without on-site nursing services 5 schools (On-Call)

Chronic Health Conditions

July 2018 – June 2019

School Health Annual Report

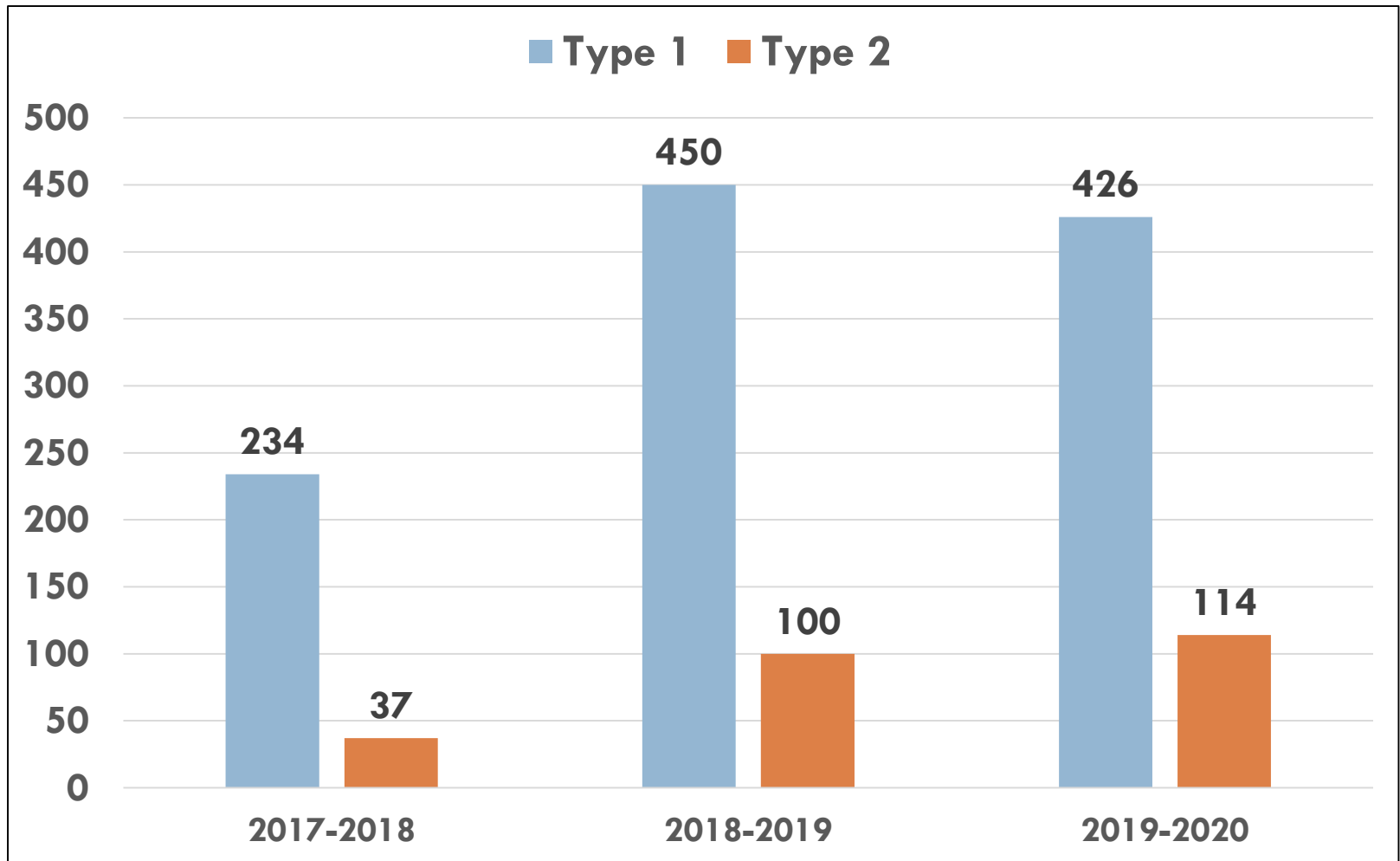
11

69,252 students with Chronic Health Conditions in our schools

- ❖ ADHD/ADD – 5,425
- ❖ Allergies (life threatening) – 1,013
- ❖ **Allergies (non-Life threatening) – 40,025**
- ❖ Asthma – 19,837
- ❖ Autism spectrum disorders – 6,029
- ❖ Bleeding disorders – 210
- ❖ Cancer – 120
- ❖ Cardiac conditions – 1,465
- ❖ Cystic fibrosis – 23
- ❖ **Diabetes – 644**
- ❖ **Seizure disorder – 1,669**
- ❖ Kidney disorders – 127
- ❖ **Mental/behavioral health conditions – 1,003**
- ❖ Sickle cell disease – 553
- ❖ Others – 2,457



Diabetes Trends in BCPS



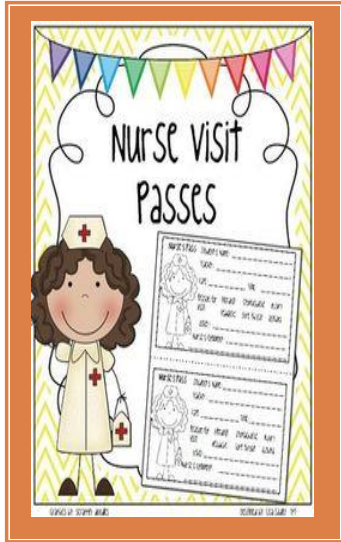
Gaps in School Health Services

13

- Increased number of students with chronic health issues/complex medical problems requiring a higher acuity level of care by a professional RN
- 100 schools assigned HST's (unlicensed personnel)
- 28 BCPS nurses
- 198 schools staffed with contracted healthcare personnel - creates lack of continuity and care coordination
- Requires additional oversight of contracted healthcare personnel by the BCPS District staff

Health Services in Schools

14



- Average Student Health Room visits
 - Daily - 78,443
- Average Medication Doses Administered
 - Daily - 24,561
- Health Screenings - 191,571
(Vision, Hearing, BMI & Scoliosis)



Why a Nurse ?

15

- Nurse has a pivotal role to improve the health and education outcomes of students
- Promoting life-long healthy behaviors from an early age
- Reducing health risks & identify mental health conditions
- Identification & monitoring of student's health care
- Decrease absenteeism & improve learning
- Identify and respond to treatment and health care needs for children with chronic health conditions and acute care health care needs

Registered Nurses (RN's) are needed in schools

16

- A student's health is directly related to his/her ability to learn
- Children with unmet health needs have difficulty engaging in the educational process
- RN - supports student success by providing health care through assessment, interventions, referrals and follow-up
- RN - addresses the physical, mental, emotional, and social health needs of students

Budget

**The School Board of Broward County, Florida
Estimated Financial Impact to Fund School-Based Nurses
Based on 19-20 Average Salary & Estimated Fringe**

	Number of Positions	Estimated Financial Impact (in millions)	
School - Based Nurse (one per school) ¹	224	\$15.37	
Clinical Nursing Supervisor - (pay grade 25) ²	6	0.65	
Clinical Nurse - (1:10 ratio, pay grade 23) ¹	22	1.54	
Substitutes (8 days per nurse)		0.40	
Mileage (Estimated \$1,800 per/yr. x 29 nurses)		0.05	
Total Estimated Cost	<u>252</u>		\$18.01
Less:			
Currently Funded Positions³			
ESE Special Programs	8	(0.55)	
Centers	9	(0.62)	
Turn Around Schools	2	(0.14)	
Medicaid-504	9	(0.61)	
Total Currently Funded	<u>28</u>		(1.92)
Other Revenue			
Children Services Council:			
(9) RN's			
(55) Health Support Tech (HST)		(1.61)	
Florida Department of Health:			
(3) RN's			
(45) Health Support Tech (HST)		(1.30)	
Total Other Revenue			(2.91)
Net Financial Impact	<u>224</u>		\$13.18

¹ Average Salary & Fringe for School-based & Clinical Nurses is \$68,605

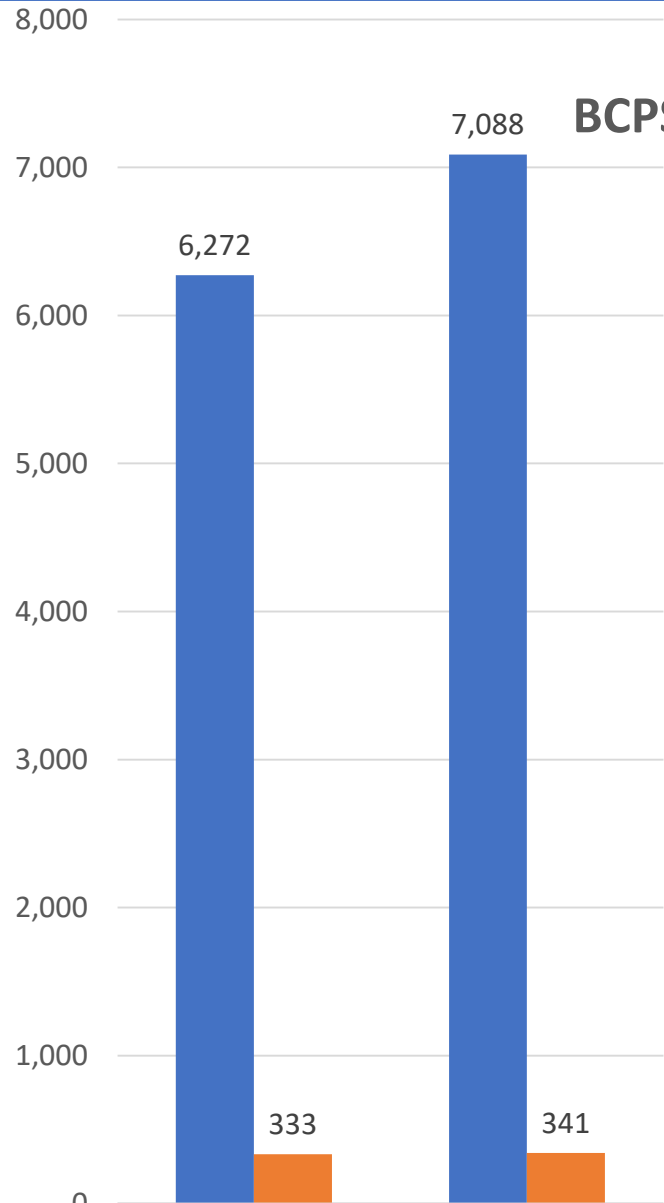
² Average Salary & Fringe for Clinical Nursing Supervisor is \$108,651

³ Includes positions that support entire school, not student specific.

504 PLANS

- # Students with Districtwide 504 Plans – **7,088**
- # Students with Diabetes 504 Plans – **341**
- Each student with a chronic health condition is assessed to determine if a 504 Plan is needed; if it is determined the healthcare personnel will follow-up with the 504 liaison at the school.

BCPS 504 Plans Dec 2018 – June 2019



■ BCPS 504 Plans	6,272	7,088
■ Students with diabetes and 504 Plans	333	341

Five Ways a School Nurse Benefits the School

Attendance - School nurses improve attendance through health promotion, disease prevention and disease management. Students with a full-time school nurse have about half the student illness- or injury-related early releases from school where no school nurse is present.

Academics – Improved attendance means the healthy student is in the classroom and ready to learn. **School Nurses** enable better performance, which also contributes to reducing drop-out rates.

Time – **School nurses** save time for principals, teachers and staff. A school nurse in the building saves principals, teachers, and clerical staff a considerable amount of time that they would have spent addressing health concerns of students.

A school nurse in the building saves:

- Principals almost an hour a day
- Teachers almost 20 minutes a day
- Clerical staff over 45 minutes a day

Staff Wellness - School nurses improve the general health of staff. According to school reports, principals, teachers, and clerical staff are **VERY** satisfied with having school nurses in their schools for several reasons:

- Teachers can focus on teaching
- Office staff spend less time calling parents and sending students home
- Healthy staff means increased attendance and productivity

Accountability - School nurses help schools stay accountable.

- Promoting compliance with federal and state law mitigates lawsuits
- Advocating for adequate staffing aligns with Healthy People 2020 recommendations of the ratio of one school nurse per 750 well students (1:750)
- Preparing for emergencies saves lives and property
- Addressing student mental health links to academic achievement

School nurses are instrumental in the identification and referral to community resources for health risks and are often the only health professional who see students on a regular basis.

School nurses are responsible for:

- Significantly decreasing the amount of days missed due to asthma, the leading cause of school absenteeism, accounting for more than 14 million missed days annually
- Managing students with chronic conditions such as diabetes and seizures to allow them to stay in class
- Identifying and treating accidents and injuries
- Counseling students about physical and emotional issues

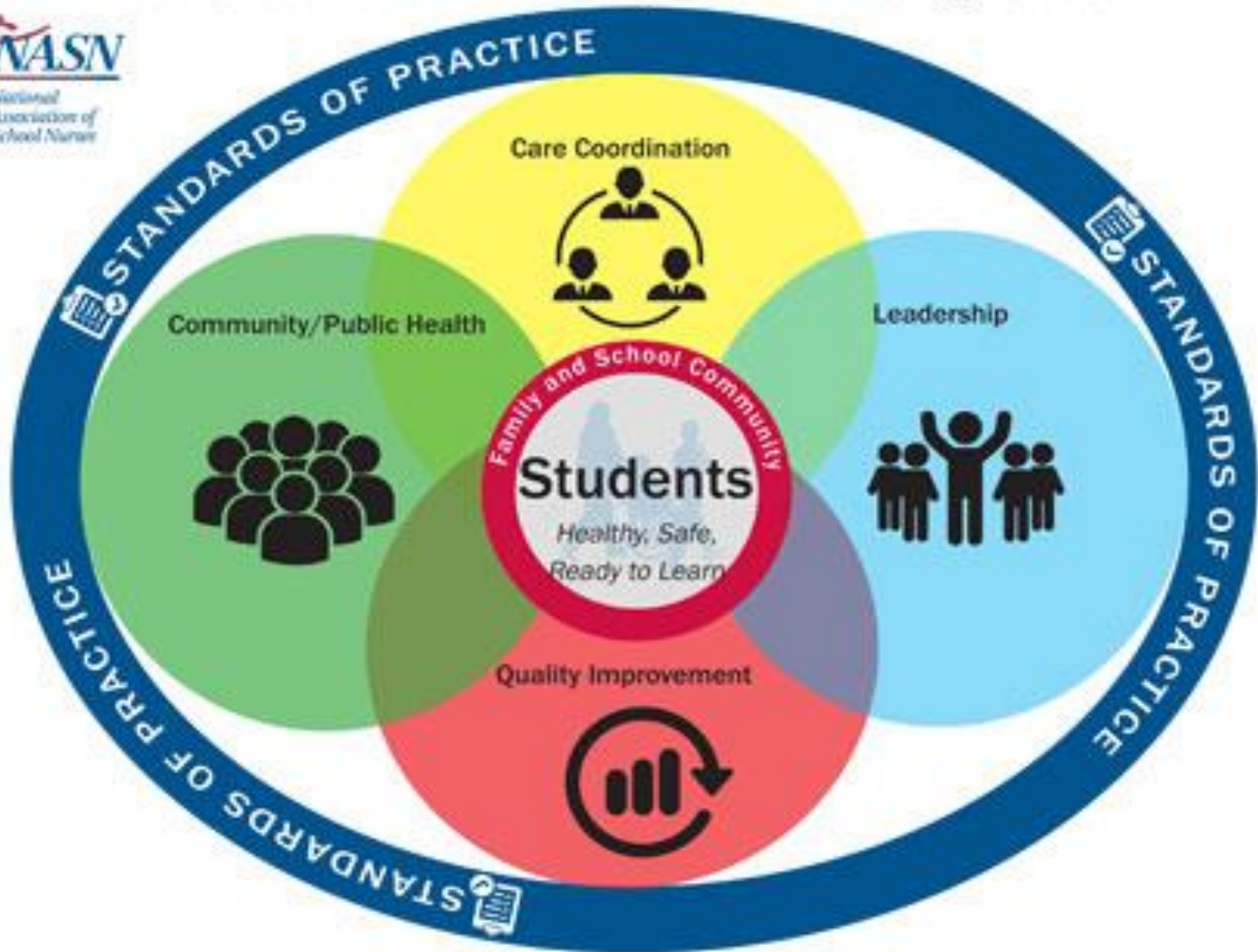
Healthy Children = Academic Success
www.nasn.org

School Nurses Economic Value

- ✓ Provide health services that increase school attendance
- ✓ Prevent and control the spread of communicable disease
- ✓ Administer specialized services to students (medications, insulin pumps, ventilators, tube feedings)
- ✓ Verification of immunizations
- ✓ Screening and make referrals for vision, hearing, BMI
- ✓ Provide health professional input and direction for school and community policies and programs
- ✓ Educate students and staff on managing their own health and wellness



Framework for 21st Century School Nursing Practice™



Coordinated Student Health Services

22

